

JetVent Centrifugal

JVC Series Induced Jet Fan



JVC Series Induced Jet Fan : JVC 100N - S



Features

- Compact design, especially suitable for car park with low head room.
- Large volume flow rate, long throw distance, low sound level.
- Easy maintenance.

Fan

- Casing in mild steel with polyester painting.
- Centrifugal backward curved wheel in mild steel with polyester painting.
- Supplied with inlet guard.

Motor

- General ventilation: All motors are IP55, Class F insulation, Totally Enclosed Non-Ventilated (TENV).
- Smoke exhaust: All motor are IP55, Class H insulation, Totally Enclosed Non-Ventilated (TENV) High Temperature Rated Motor (200°C, 250°C, 300°C or 400°C / 2 hrs.)

Operating Temperature

- General ventilation: -20°C to +55°C.
- Smoke exhaust: 200°C, 250°C, 300°C or 400°C / 2 hrs.

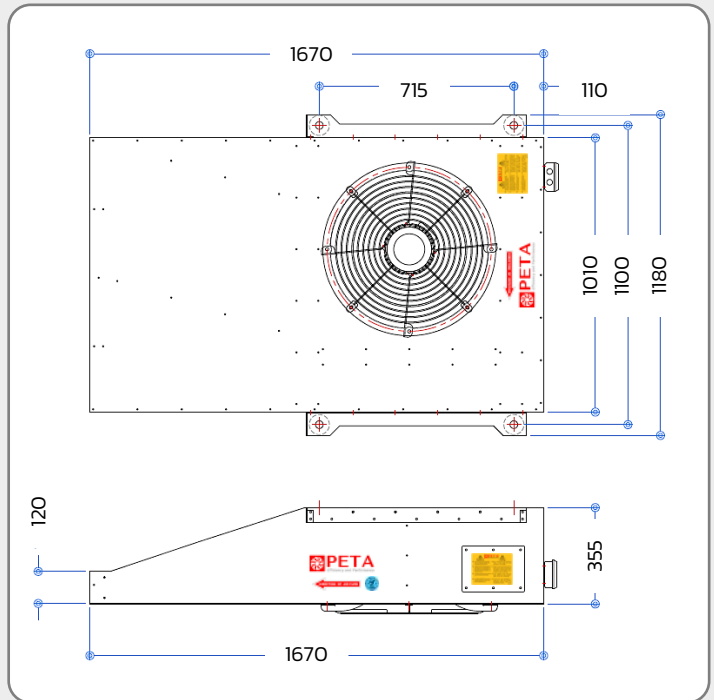
Specification

Flow Rate (CMH)	11100
Outlet Velocity (m/s)	26.2
Fan Speed (RPM)	1430
Thrust Force (N)	~100
Fan Weight (kg)	125
Sound (Free Field) @3m dB(A)	81
Power (kW)	3.0
Power Supply (V/Ph/Hz)	380/3/50

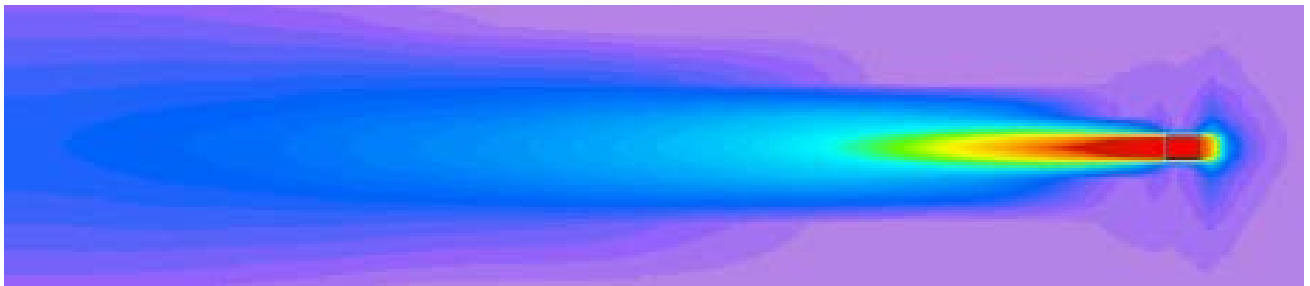
Dimension



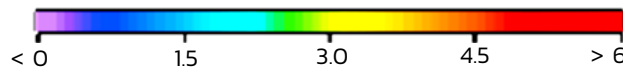
All dimensions in mm.



Velocity Profile



Speed (m/s)



Distance (m)	0	3	6	9	12	15	18	21	24	27	30	33	36	39	42	45
Velocity (m/s)	26.2	18.9	11.4	7.2	4.4	3.6	3.1	2.7	2.2	1.8	1.6	1.4	1.3	1.2	1.1	1.0

JVC Series Induced Jet Fan : JVC 50N - S

Features

- Compact design, especially suitable for car park with low head room.
- Large volume flow rate, long throw distance, low sound level.
- Easy maintenance.

Fan

- Casing in mild steel with polyester painting.
- Centrifugal backward curved wheel in mild steel with polyester painting.
- Supplied with inlet guard.

Motor

- General ventilation: All motors are IP55, Class F insulation, Totally Enclosed Non-Ventilated (TENV).
- Smoke exhaust: All motor are IP55, Class H insulation, Totally Enclosed Non-Ventilated (TENV) High Temperature Rated Motor (200°C, 250°C, 300°C or 400°C / 2 hrs.)

Operating Temperature

- General ventilation: -20°C to +55°C.
- Smoke exhaust: 200°C, 250°C, 300°C or 400°C / 2 hrs.

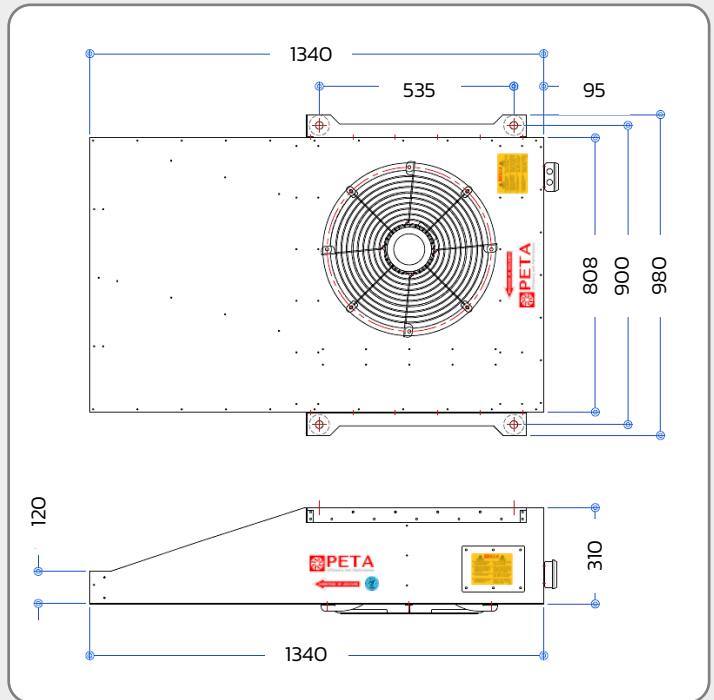
Specification

Flow Rate (CMH)	7200
Outlet Velocity (m/s)	21.2
Fan Speed (RPM)	1400
Thrust Force (N)	~50
Fan Weight (kg)	90
Sound (Free Field) @3m dB(A)	76
Power (kW)	1.5
Power Supply (V/Ph/Hz)	380/3/50

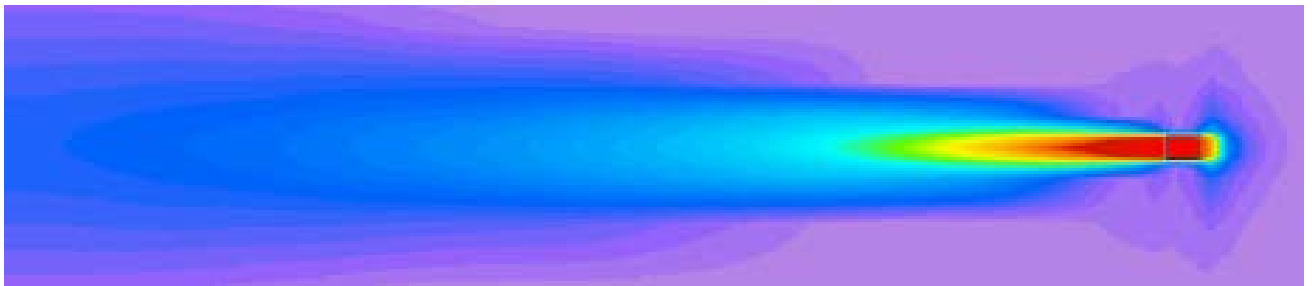
Dimension



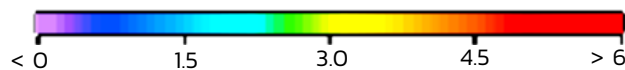
All dimensions in mm.



Velocity Profile



Speed (m/s)



Distance (m)	0	3	6	9	12	15	18	21	24	27	30	33	36	39	42	45
Velocity (m/s)	21.3	14.2	9.3	6.5	4.2	2.9	2.4	1.9	1.7	1.5	1.4	1.3	1.3	1.2	1.1	1.0